

Clinic Locations

On-Campus Location: The Evergreen House is located adjacent to the Swain parking lot (behind the Hanes Art Center and diagonally across from Memorial Hall). Primarily, but not exclusively, serves adults and students.

Off-Campus Location: The CRCC facility (Community Research Center and Clinic), is located by UNC's Finley Golf Course near the intersection of NC 54 and US 15-501 (UNC Hospitals Imaging and Spine Center is on this intersection). Primarily, but not exclusively, serves children and families.

Please visit our website for maps and directions, more information regarding our services, our faculty, links to the academic program, and more.

<http://clinic.unc.edu>

NOTE: *The University is committed to providing an inclusive and welcoming environment for all members of our community.*

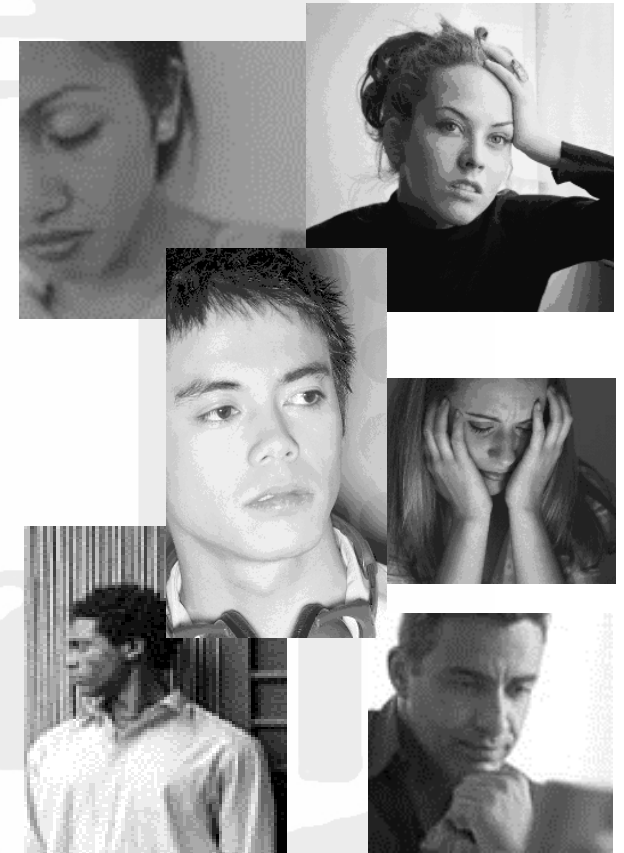
Consistent with this principle and applicable laws, it is therefore the University's policy not to discriminate in offering access to its educational programs and activities on the basis of age, gender, race, color, national origin, religion, creed, disability, veteran's status, or sexual orientation. .

UNC Department of Psychology

Davie Hall - Attn: Clinic
Chapel Hill, NC 27599-3270

<http://clinic.unc.edu>
<http://clinic.unc.edu/initial-contact>

UNC Department of Psychology Community Clinic



Psychological Services

<http://clinic.unc.edu/initial-contact>



Our Commitment to the Community

The UNC Department (Dept.) of Psychology Community Clinic is dedicated to providing high quality and affordable psychological services to the triangle community and the UNC campus through specialty clinics for:



- **children**
- **adolescents**
- **adults**
- **couples**
- **families**

Our Commitment to Education and Research

The UNC Dept. of Psychology Community Clinic is a community-based training facility for the Ph.D. program in clinical psychology.

We are dedicated to providing the highest quality training for our graduate students as they learn evidence based psychological treatments and assessments.

A related mission of the clinic is the promotion and support of clinical research and the sharing of knowledge with the surrounding community through consultative services, presentations, and workshops.

Our Services

We provide effective psychological care in a compassionate environment.

THERAPY

- Sadness, depression, irritability, mood swings
- Disruptive behavior, anger, aggression
- Inattentiveness/hyperactivity
- Anxiety, panic attacks
- Stress, coping with trauma, grief
- Self-esteem, eating and other disorders
- Relationship issues (co-workers, friends, family)
- Vocational or academic functioning

ASSESSMENT

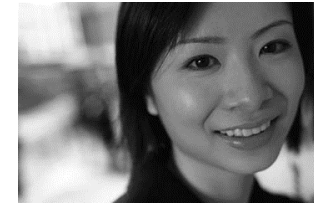
- Full psychological assessments
- ADHD/LD
- Gifted
- Early Kindergarten
- Limited assessments available with a licensed psychologist for special testing (LSAT, MCAT, etc.)

All treatment is supervised by nationally renowned and NC - licensed psychologists serving on the UNC Dept. of Psychology faculty.

Hours

We offer flexible daytime and evening hours Monday through Friday (depending on the availability of the student and circumstance, weekend appointments have been made on an exception basis).

"I didn't know where I could go."



Fees

We offer reduced fees based on income. Fees are discussed and determined during the telephone screening interview.

We do not directly file insurance claims. However, clients may request a statement of account that can be submitted to their insurance company for reimbursement purposes.



Referrals

Clients may refer themselves and we gladly accept referrals from other medical and mental health professionals. All clients are phone screened to determine appropriateness for our clinic and for the best possible care.

Ask a question or arrange a phone screening:

**[http://clinic.unc.edu/initial-
contact](http://clinic.unc.edu/initial-contact)**